



# **CDG Selection Guide**

a guide through INFICON CDGs

# Capacitance Diaphragm Gauge

CDG: gas type independent, high accuracy corrosion resistant

Sensor Temperature [°C]	Accuracy [%]	Characteristics	Set points	Full scales [Torr]						Product	Type
				10m	100m	1	10	100	1000		
Ambient	0.5 1	Compact Gauge	w/o				0.01 - 10	0.1 - 100	1 - 1000	CDG020D	Porter
Ambient	0.2	Standard Gauge	w/o	0.1 - 100m	0.0005 - 1	0.005 - 10	0.05 - 100	0.5 - 1000	CDG025D	SKY	
			2						CDG025D-S		
		Process Gauge	2						CDG025D X3		
		Current Loop 4-20mA	w/o								
Ambient	0.2	EtherCAT	2			0.0005 - 1	0.005 - 10	0.05 - 100	0.5 - 1000	CDG025D2	Edge
45	0.15	Process Gauge	2		0.1 - 100m	0.0005 - 1	0.005 - 10	0.05 - 100	0.5 - 1000	CDG045D	SKY
		Compact Gauge, EtherCAT			CDG045D2					Edge	
		Fast Process Gauge		0.01 - 10m	0.1 - 100m					CDG045Dhs	Stripe
45	0.025	Reference Gauge	w/o		0.1 - 100m	0.0005 - 1	0.005 - 10	0.05 - 100	0.5 - 1000	CDGsci	Cube
100	0.2	Process Gauge	2		0.1 - 100m	0.0005 - 1	0.005 - 10	0.05 - 100	0.5 - 1000	CDG100D	SKY
		Compact Gauge, EtherCAT			CDG100D2					Edge	
		Fast Process Gauge		0.1 - 100m	CDG100Dhs					Stripe	
160	0.4	Process Gauge	2			0.0005 - 1	0.005 - 10	0.05 - 100	0.5 - 1000	CDG160D	SKY
200	0.4	Process Gauge	2			0.0005 - 1	0.005 - 10	0.05 - 100	0.5 - 1000	CDG200D	SKY
Ambient	0.5	OEM Integration	2				0.01 - 10	0.1 - 100	1 - 1000	CDS500D	Spot

Please select part number, flange, connector, filter, field bus, etc in ordering information on website or data sheet

# CDG - Family



**CDG020D**  
**Porter**

**The Worker**  
**High Value**  
**For Price**



**CDG025D**

unheated,  
high  
precision



**CDG045-200D**  
**SKY**

high precision  
45 to 200°C



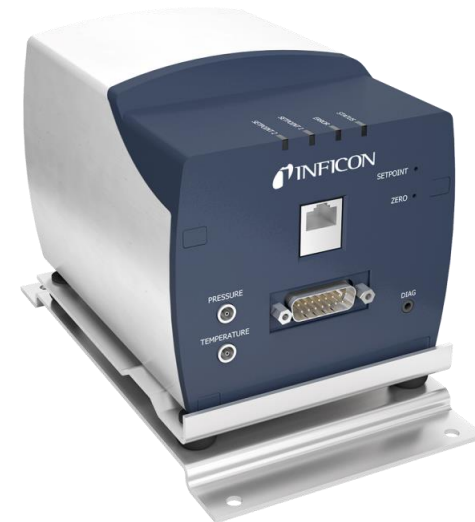
**CDG045-100D**  
**EDGE**

small  
45 to 100°C



**CDG045-100Dhs**  
**STRIPE**

fast  
45 to 100°C



**CDG045Dsci**  
**CUBE**

highest precision  
45°C



**CDS500D**



**CDS550D**

**SPOT – sensors for integration**

# CDG020D - Porter



- Stable and reliable pressure measurement
- Easy to use
- High Value-for-Price relation
- Either 0.5% or 1% of reading
- Protected against corrosive gases

# CDG025D - room temperature CDG

**High precision**

**Excellent temperature compensated**

**Choose from**

**standard**

**and**

**Process CDG (harsh SEMI-processes)**



**CDG025D**



**CDG025D-X3**

# CDG045D - CDG200D SKY

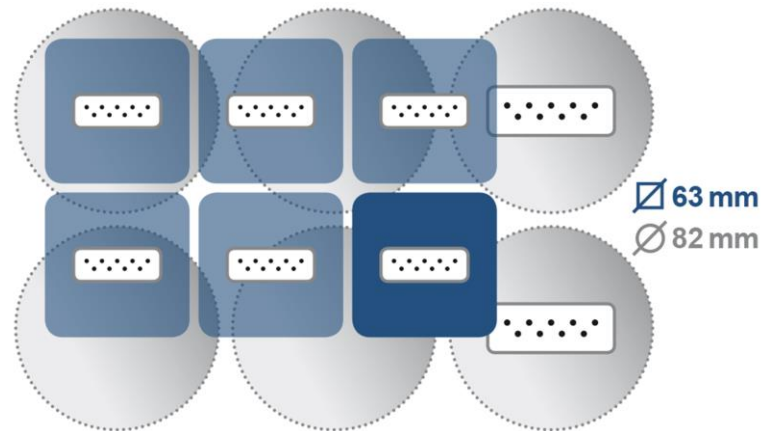


- Temperature controlled 45°C to 200°C
- High precision
- Avoid any condensation of process gas
- Protected against process-by-products

# CDG045 / 100D2 - EDGE



- Temperature controlled 45°C to 100°C
- High precision
- Avoid any condensation of process gas
- Protected against process-by-products
- Smaller footprint compared to SKY CDG



# CDG045 / 100Dhs - STRIPE

**Fast measuring – short responsetime: less than 2 ms**



Temperature controlled 45°C to 100°C

High precision

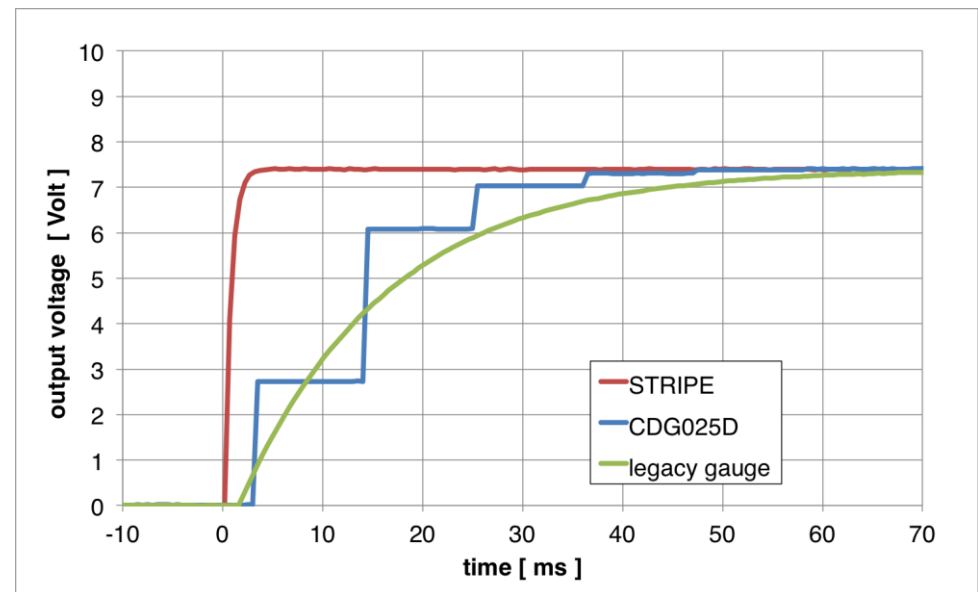
**Option: lowest full scale 10 mTorr**

Avoid any condensation of process gas

Protected against process-by-products

EtherCAT interface

**This is  
fast:**



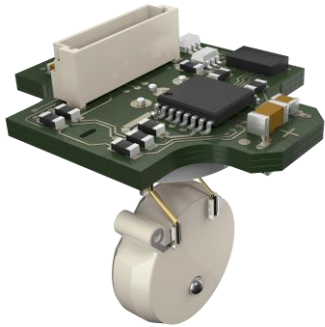


# CDG045Dsci - CUBE

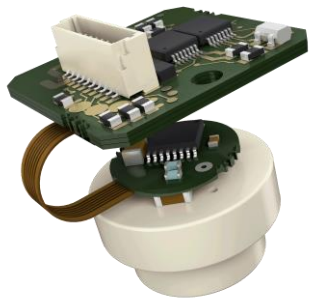


- **Highest precision [0.025% of R] – for calibration labs**
- pure reference for vacuum systems
- Temperature controlled 45°C
- Instrument for scientists and quality gurus
- **20 Bit output**
  - analog,
  - RS232
  - TCP/IP
  - HTML
  - Ethernet, wired and wireless

# CDS500 / CDS550D - SPOT CDG sensors for integration

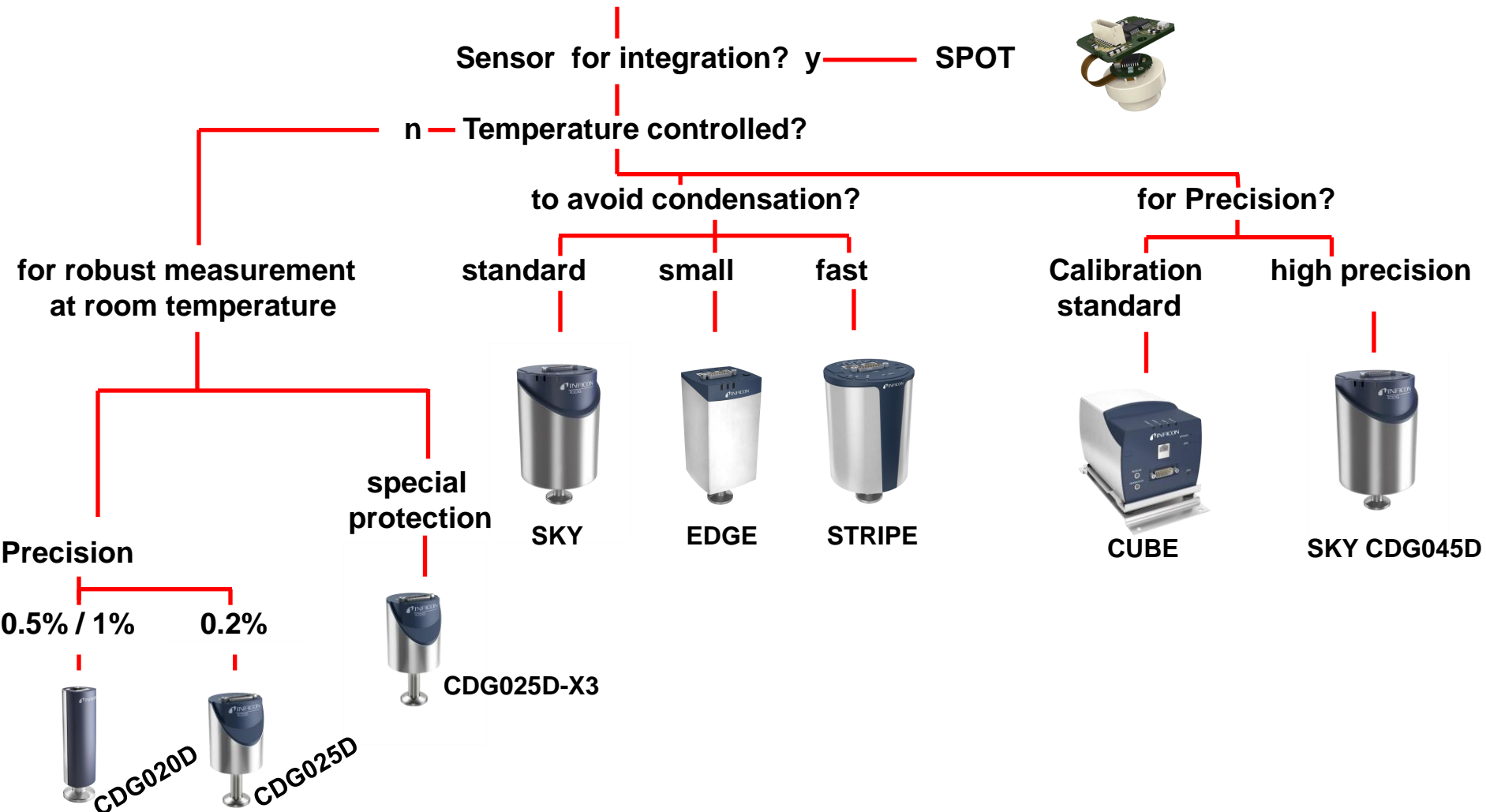


- The ideal choice for OEM
- who want to integrate a sensor
- CDS500D - a suspended ceramic sensor, weldable
- CDS550D - O-ring sealing surface
- Both sensors
- Al<sub>2</sub>O<sub>3</sub> coated
- SPI interface
- short response time (less than 2 ms)
- customer interface required (mech. and el.)



# In the beginning – there is a decision

## Which is my CDG?



# Global Presence

950 employees; offices in 17 countries

Local support of customers is INFICON's competitive advantage



# Visionary Sensor Technology